

PERIPHERAL NEUROPATHY: NERVE RE-EDUCATION HOME THERAPY

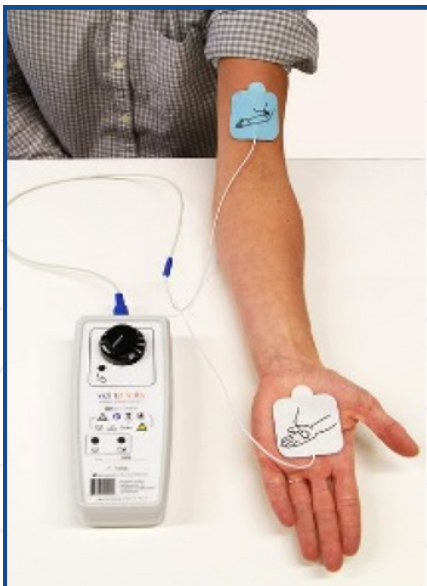
Why is it effective and how does it work?

Patients with peripheral neuropathy in their hands and in their feet can experience a variety of symptoms including burning or shooting pains, electrical shocking sensations, numbness, tingling, hypersensitivity, and spasms. For some, they may experience both numbness and pain simultaneously.



Many times, after extensive testing, patients are told that there is nothing that can be done for them except being prescribed medications to control the pain. Unfortunately, the majority of these meds are anticonvulsants or antidepressants which, as a secondary effect, reduce nerve pain. These drugs often produce horrible side effects including confusion, dizziness, drowsiness, lethargy, reduced coordination, memory loss, reduced cognitive function, anger, depression, suicidal tendencies, vision problems, etc.

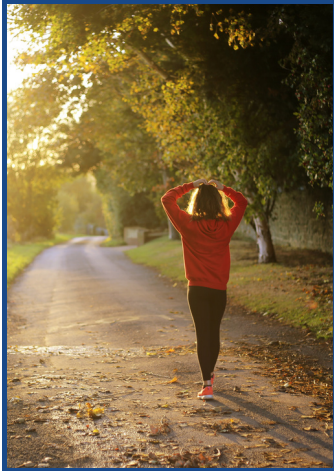
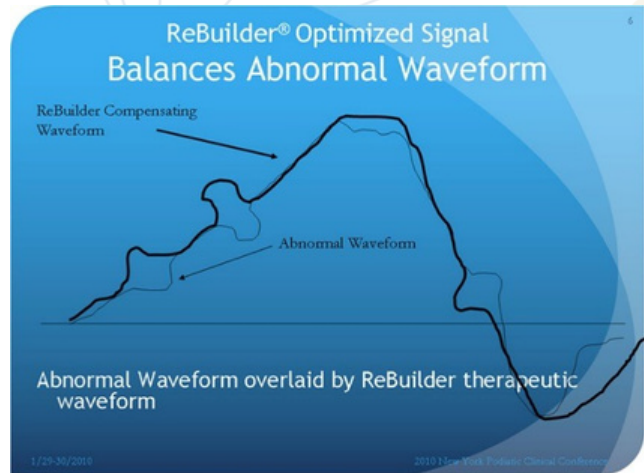
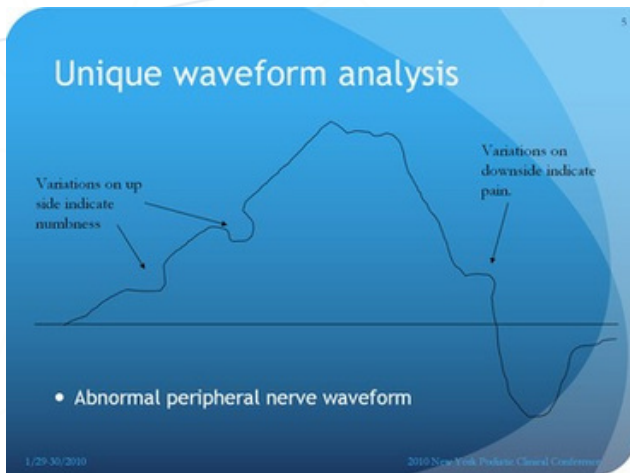
As the body becomes acclimated to the drug, doses need to be increased in order to work, increasing the negative side effects. These prescription medications do not solve the problem. They simply suppress the pain, but their health continues to deteriorate. Their quality of life is lessened as their mobility is compromised.



The ReBuilder is a small hand-held, easy-to-use electronic stimulator that can easily be used at home. Created and developed by Dr. David Phillips, the ReBuilder has over 30 years of proven safety and efficacy, making it one of the most widely used equipment for peripheral neuropathy treatment.



The ReBuilder signal is a unique combination of nerve and muscle stimulus, with its roots in TENS and EMS technologies, but vastly more precisely controlled. The ReBuilder's 3 microprocessors control its biofeedback circuit which allows it to self-modulate the outgoing waveform in real-time, almost 8 times per second; each time adjusting the compensatory wave in accordance with the body's aberrational response waveform. Each outgoing signal is timed such that the nerves have sufficient opportunity to repolarize and thus be ready for the next signal. This allows pain control without exacerbating numbness issues; the opposite of what standard TENS does.



This same biofeedback mechanism allows the treatment of both legs in their entirety simultaneously by sending its signal from one foot to the other. This way the nerve pathway is stimulated from the tips of the toes to the base of the spine, bilaterally. By comparison, a standard TENS uses electrodes in close proximity to numb a smaller, localized area acting as an electric analgesic. About 20% of the ReBuilder signal is a muscle stimulus designed to cause passive exercise of the skeletal muscle venous blood pump system.

This allows for an increase in muscle strength and improvements in circulation – both blood flow and lymphatic systems benefit. The patient now has toxins flushed away and nutrient-rich blood delivered to their nerve endings, all with reduced edema. You should expect to see improvements to balance and gait - all done with reduced medication. As a result, positive changes in quality of life will be evident. Most report getting a better night's sleep and an interesting side-effect, many see faster healing of foot sores. (common to diabetics).

